

Fitover Sizing Guide

Use this printable guide to determine which fitover will work with your glasses.

1. Verify that the scale below matches the width of a credit card.
2. Place your frame inside the red box. If it fits, you're good! (Note: If the general frame shape of your glasses does not align with the frame shape of the fitovers, you may not achieve an ideal fit.)

For scale, this should be the width of a credit card

Allure

Size: 150 x 49mm • Fits frames less than 142 x 44mm



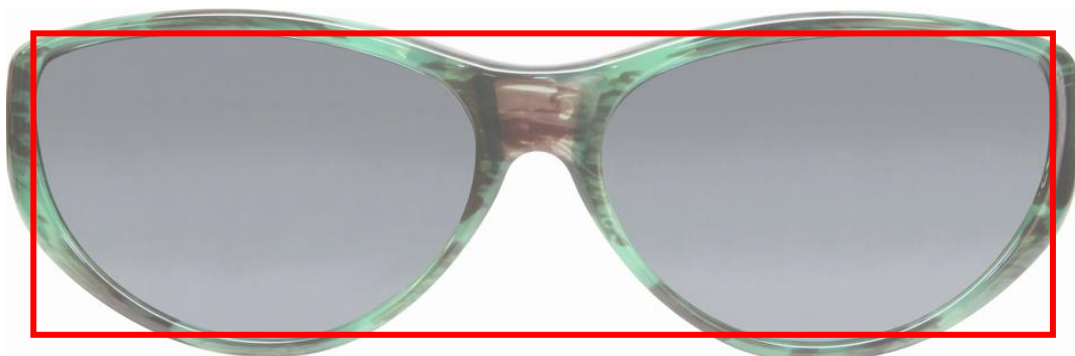
Binya

Size: 142 x 42mm • Fits frames less than 135 x 36mm



Chic Kitty

Size: 139 x 46mm • Fits frames less than 135 x 40mm



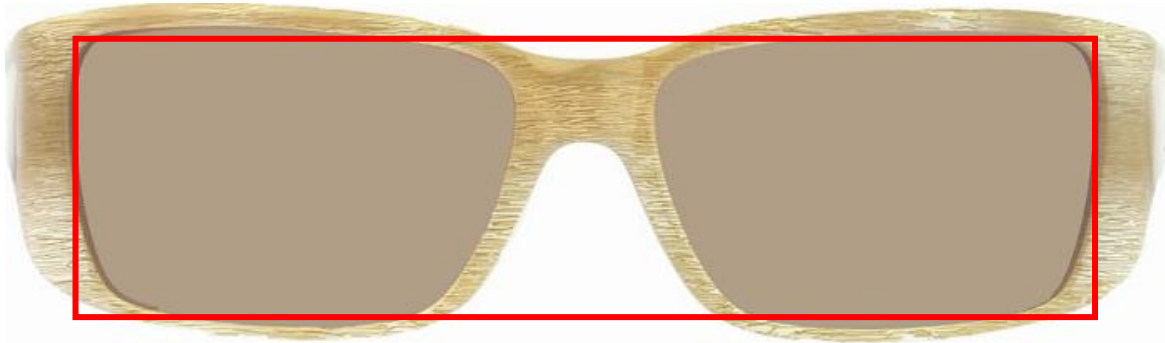
Jett

Size: 148 x 43mm • Fits frames less than 142 x 38mm



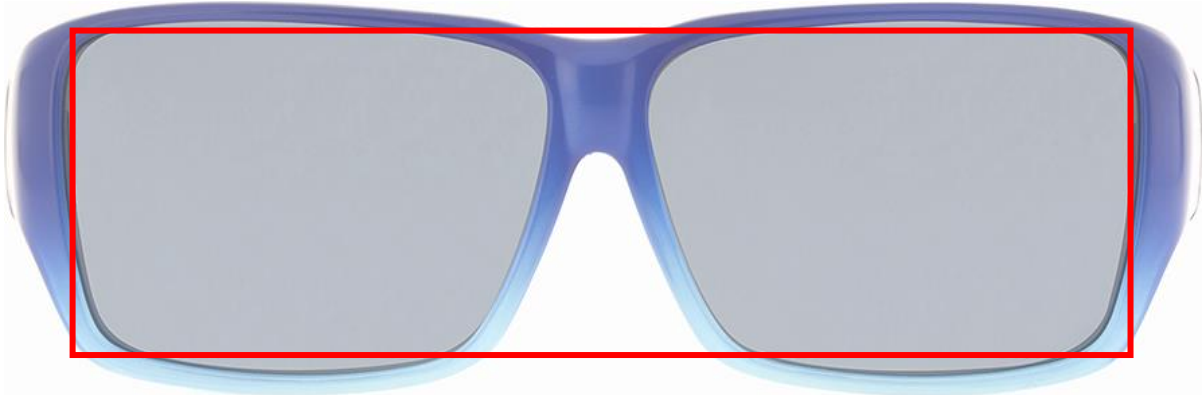
Nowie

Size: 140 x 41mm • Fits frames less than 135 x 37mm



Oogee

Size: 145 x 48mm • Fits frames less than 140 x 43mm



Quamby

Size: 155 x 47mm • Fits frames less than 141 x 41mm

